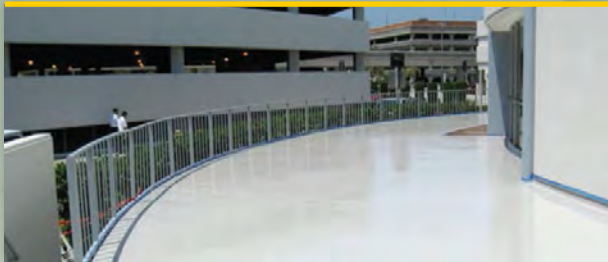


Waterproofing
SYSTEMS
Worldwide...





Since 1970, Pacific Polymers® has been a leading brand offering a complete line of Polyurethane waterproof membrane systems, traffic coating systems, joint sealants, and polyurea systems. While keeping the environment in mind, Pacific Polymers® offers environmentally friendly, energy efficient, low odor, and low VOC products that help contribute towards LEED Credits.

Through superior research and development, Pacific Polymers® continues to offer design professionals, distributors, applicators, and contractors the highest quality products and service in the industry.



CONTACT US TODAY

TOLL FREE: 800.878.7876

LOCAL: 972.438.9111

www.pacpoly.com

COATING SYSTEMS Polyurethane – Vehicular Traffic

Product	Description	Use
Elasto-Deck 5000 H.T.	A liquid applied, single moisture cured, polyurethane parking deck coating system.	Elasto-Deck 5000 H.T. can be used on parking decks where a skid-resistant, long lasting, wear resistant surface is required.

COATING SYSTEMS Polyurethane – Pedestrian Traffic

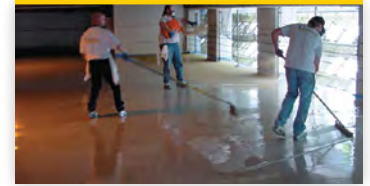
Product	Description	Use
Elasto-Deck 5000 X2	An elastomeric waterproof deck coating system, using moisture cured polyurethane products. An aggregate is incorporated into the system to provide an anti-skid surface.	Elasto-Deck 5000 X2 is primarily used for waterproofing critical areas such as patios, sun decks, stairways, and balconies. Provides a durable wear resistant surface for pedestrian traffic.
Elasto-Deck 5000 W.D.A.	An elastomeric waterproof walking deck coating system, using moisture cured polyurethane products. An aggregate is incorporated into the system to provide an anti-skid surface.	Elasto-Deck 5000 W.D.A. is used as a waterproof coating for plywood and concrete walking decks, plazas, balconies and other pedestrian traffic areas.
Elasto-Deck 5000 M.R.	An elastomeric waterproof deck coating system for interior mechanical room floors using moisture cured polyurethane products.	Elasto-Deck 5000 M.R. is primarily used to waterproof interior mechanical room floors which are subject to light pedestrian traffic.

COATING SYSTEMS Polyurea – Pedestrian/Vehicular Traffic

Product	Description	Use
Elasto-Deck 6500 PT	A two component High solids, low VOC pedestrian traffic coating system.	Elasto-Deck 6500 PT is used for waterproofing walking decks, balconies and plazas.
Elasto-Deck 6500 VT	A two component High solids, low VOC vehicular traffic coating system.	Elasto-Deck 6500 VT is used for waterproofing vehicular decks.
Elasto-Deck 6500 MR	A two component High solids, low VOC waterproof traffic coating system.	Elasto-Deck 6500 MR is used for Waterproofing mechanical and equipment rooms where a “Low odor” system is required for interior and exterior locations.

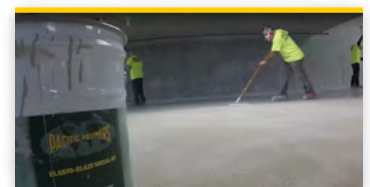
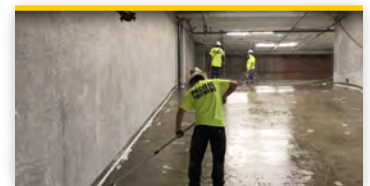
FLUID APPLIED SYSTEMS

Product	Description	Use
Elasto-Deck B.T.	A liquid applied, single component elastomeric waterproofing membrane system.	Elasto-Deck B.T. is primarily used for waterproofing planters, below grade, under mortar bed and between slab applications.
Elasto-Mat D&G	A single component, fluid applied, high solids membrane for waterproofing dry, damp, and green concrete.	Elasto-Mat D&G can be used to waterproof below grade walls, between slab, planters, under shower pans as well as under terrazzo, or tiles floors.
Elasto-Deck B.T. H2O	A unique water-cured, liquid applied, single component, moisture cured polyurethane waterproof membrane system.	Elasto-Deck B.T. H2O can be used to waterproof between slabs, podium decks, shower pans, well as membrane system under terrazzo or tile floors.
Elasto-Deck 5500	A liquid applied, single component, moisture cured, polyurethane elastomeric membrane.	Elasto-Deck 5500 is widely used to waterproof concrete and plywood decks which are to be covered with carpet, tile, or wood decking. May be used under thin-set mortar or mortar bed tile installations.



RUNWAY Sealants

Product	Description	Use
Elasto-Thane 200	A two-part, self-leveling, jet fuel resistant cold applied, modified polyurethane based joint sealant.	Elasto-Thane 200 is used for sealing joints in airfield runways, parking aprons and other areas where joints may be subject to fuel spillage. Conforms to Federal Specification SS-S-200E.



MULTI-PURPOSE CONSTRUCTION Sealants

Product	Description	Use
Permathane® SM7108	A one-part, moisture cured Gun-Grade non-staining polyurethane sealant.	Permathane 7108 is used to seal and caulk all joints that are subject to contraction and expansion. Bonds to concrete, wood, glass and metal.
Elasto-Thane 227/227R	A two-part, Gun-Grade non-staining polyurethane sealant.	Elasto-Thane 227/227R is used for sealing and caulking all joints that are subject to movement caused by expansion and contraction of structures with changes in temperature. Bonds to concrete, wood, metal, and masonry.





From the runways at Taoyuan International Airport in Taipei to Pier 11, located in lower Manhattan's business district, you'll find successful projects from Pacific Polymers®. For over 40 years, Pacific Polymers® has provided the construction industry worldwide with a complete line of polyurea systems, polyurethane waterproof membrane systems, traffic coating systems, and joint sealants.

These products are manufactured in a plant whose quality management system is registered to ISO 9001:2015.

ITW Polymers Sealants North America

111 S Nursery Road, Irving, Texas 75060 • Toll Free: (800) 878-7876 • www.pacpoly.com